



Standalone bushfire plan 2025-2026

Nannup District High School

Purpose

The *Standalone bushfire plan* document is a detailed plan of how your school or site is to prepare and respond to the bushfire high-threat period or in the event of a bushfire.

As principal or site manager, you must complete this template to have a plan in place to respond to a bushfire emergency. This plan is to be read in conjunction with information on Ikon to [prepare for bushfire season at your school](#).

All staff, students, contractors and visitors on the school or site are to follow this completed plan in the event of a bushfire emergency. All other emergencies are to be managed in accordance with the school or site's incident management plan, as per the [Incident management manual](#).

Complete and lodge your plan online by 31 August.

Contents

| | |
|--|-----------|
| 1. School or site details | 3 |
| 2. Emergency response contact list | 4 |
| 2.1 Important bushfire emergency contact sources..... | 5 |
| 3. School or site Response Team | 6 |
| 4. School or site response telephone tree..... | 7 |
| 4.1 Residential college response telephone tree | 8 |
| 5. Emergency equipment | 9 |
| 6. Bushfire preparation checklist | 10 |
| 7. Bushfire action plan maps | 12 |
| 7.1 Onsite 'safer building location(s)' | 12 |
| 7.2 Offsite evacuation locations | 13 |
| Appendix A - Bushfire warning stages | 14 |
| Appendix B - Procedures in the event of a sudden bushfire | 15 |
| Relocate to onsite 'safer building location' | 15 |
| Offsite evacuation procedures | 17 |
| Appendix C - Pre-emptive (planned) school closure procedures..... | 19 |
| Flow chart – Principal's pre-emptive school closure response | 20 |
| Appendix D - After-hours or school holiday procedures | 21 |

1. School or site details

To complete this plan, on the front cover of the document:

- insert your school or site name
- add the year for the new bushfire season
- add the date in the footer to show when the plan became active.

Enter information into the **grey** sections of this document, following the prompts in the square brackets where featured. You can add extra rows to tables where necessary.

When your plan is complete, follow the steps on Ikon to [lodge, update or access your standalone bushfire plan online](#).

| School or site details | |
|---|---|
| School or site name (include name of co-located school or facilities if applicable) | Nannup District High School |
| School or site address | Bishop St Nannup WA 6275 |
| Education Region | Southwest |
| Number of students | 60 |
| Number of students requiring extra support if evacuating | 0 |
| Number of staff | 20 |
| Estimated number of animals on site, if applicable | 0 |
| Estimated number of animals on site that would require evacuation, if applicable | 0 |
| Number of school or site sides bordered by bush | 2 |
| Names of major roads bordering school or site | Warren Road |
| School or site's site-specific alert, for example: <ul style="list-style-type: none"> • siren/pause x 3 • continuous handbell • continuous siren or short whistle blasts | Long Bell – Move to Safer Area (Library onsite), oval (offsite) |
| Plan prepared by (name) | Henry Johnston |
| Date prepared or reviewed | 29 August 2025 |

2. Emergency response contact list

Dial 000 in an Emergency

Enter the contact details into the following table:

| Organisation | Details | Phone number / website |
|---|--|--|
| Local police (for example, name of nearest police station) | 9756 3555/0427 019 476 Nannup Police Station | 131 444 |
| Local hospital (name of nearest hospital or medical emergency facility) | Nannup Hospital | 000 9756 3800 |
| Department of Fire and Emergency Services regional contact | Geoff Allam (Nannup Shire) | 9756 1018 or 0437 077 169 |
| Local fire brigade (always use 000 during an emergency) | Nannup Town Brigade | 9756 1018 or 0437 077 169 |
| Bus contractors (ready for pre-emptive closure or offsite evacuation) | Carlotta: Brad Black Sally Hepburn Scott River: Paul & Vicky Lamers Cundinup: Tad Gryglicki | 0419287273 0457309018 97560987 0447005691 97561891 0419931125 |
| Electricity provider - in the case of a power outage (for example, Horizon Power, Western Power) | Western Power | 131 351 |
| State emergency service | | 13 25 00 |
| Poisons information (where relevant) | | 13 11 26 |
| Director of Education name | Dainon Couzic | 0897 910 316 |

For agricultural colleges and farm schools only:

| Contact person or organisation | Details | Phone number / website |
|--|---------|------------------------|
| Animal technicians | | |
| Local veterinarian or 24 hour emergency clinic | | |
| Person competent in humane euthanasia of livestock | | |

2.1 Important bushfire emergency contact sources

DIAL 000 in an emergency

Emergency WA

Website: <https://www.emergency.wa.gov.au/>

Department of Fire and Emergency Services

Information line: 13 33 37

Website: <https://www.dfes.wa.gov.au/>

Facebook: <https://www.facebook.com/dfeswa>

Twitter: https://twitter.com/dfes_wa

ABC Emergency

Website: <https://www.abc.net.au/emergency>

Local radio

ABC local radio: Find your local radio station at <https://www.abc.net.au/local>

6PR: Listen online at <https://www.6pr.com.au/listen-live/> or tune into AM 882 and Digital Radio

3. School or site Response Team

Enter the names and mobile numbers of the staff responsible for carrying out emergency procedures during a bushfire event. The principal or site manager coordinates the incident response to onsite or offsite locations (refer to Appendix B & C procedures).

Examples of suggested duties include:

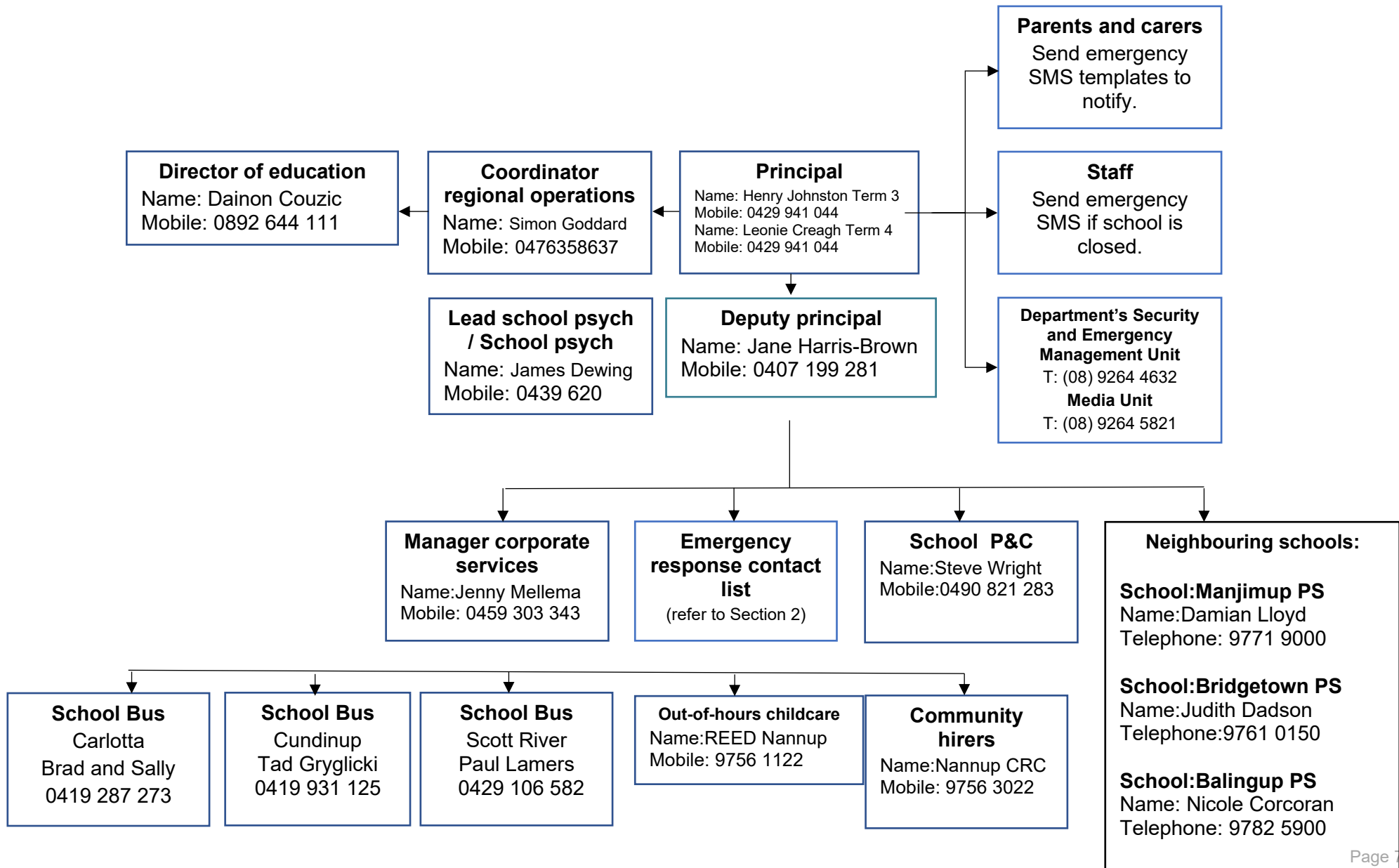
- fire warden duties
- checking all rooms
- keeping a copy of school or site registers for roll call
- monitoring the bushfires warnings stages (as per Appendix A)
- send out text alerts to parents
- liaising with emergency services, community members, parents and carers
- enacting plan for animal welfare in an emergency if applicable.

Consider making cards that outline the duties of the school or site response team. This can be useful to hand out at the start of the incident.

| Position | Staff name | Duties | Mobile number |
|---|--------------------------|--|--|
| Principal / Site Manager | Henry Johnston Term 3 | Remain in school office until situation is clear, alarm raised, evacuation underway. Collect keys, phone, megaphone, area maps & proceed to on-site location/library. Coordinate staff to undertake searches of grounds and buildings. Communicate with MCS and remain in overall control of the evacuation. | 0409 685 950 W 0897 468 800 W 0439 444 348 |
| | Leonie Creagh Term 4 | | 0429 941 044 W 0897 468 800 W 0439 444 348 |
| Deputy Principal / Senior Supervisor | Jane Harris-Brown | Collect keys and phone and head directly to library or on-site location to open room. Take role of Principal if not present. With school officer, liaise with teachers, coordinate check of student whereabouts. | 0407 199 281 |
| Manager Corporate Services | Jenny Mellema | To remain in the office until directed to leave by Principal. Communicate with outside agencies as directed and report back to Principal. Direct any person entering office to the onsite location. | 0459 303 343 |
| Teachers / Staff | Sharyn Gibellini | To collect class, absentee and in/out logs, visitor book, medical kits, phone & keys. Take role of MCS if she is not present. When delegated, communicate with MCS. | 0488 975 612 |
| Accredited first aid officers | Henry Johnston | | 0409 685 950 |
| Animal technicians (agricultural colleges) | | | |
| Other (if applicable) | | | |

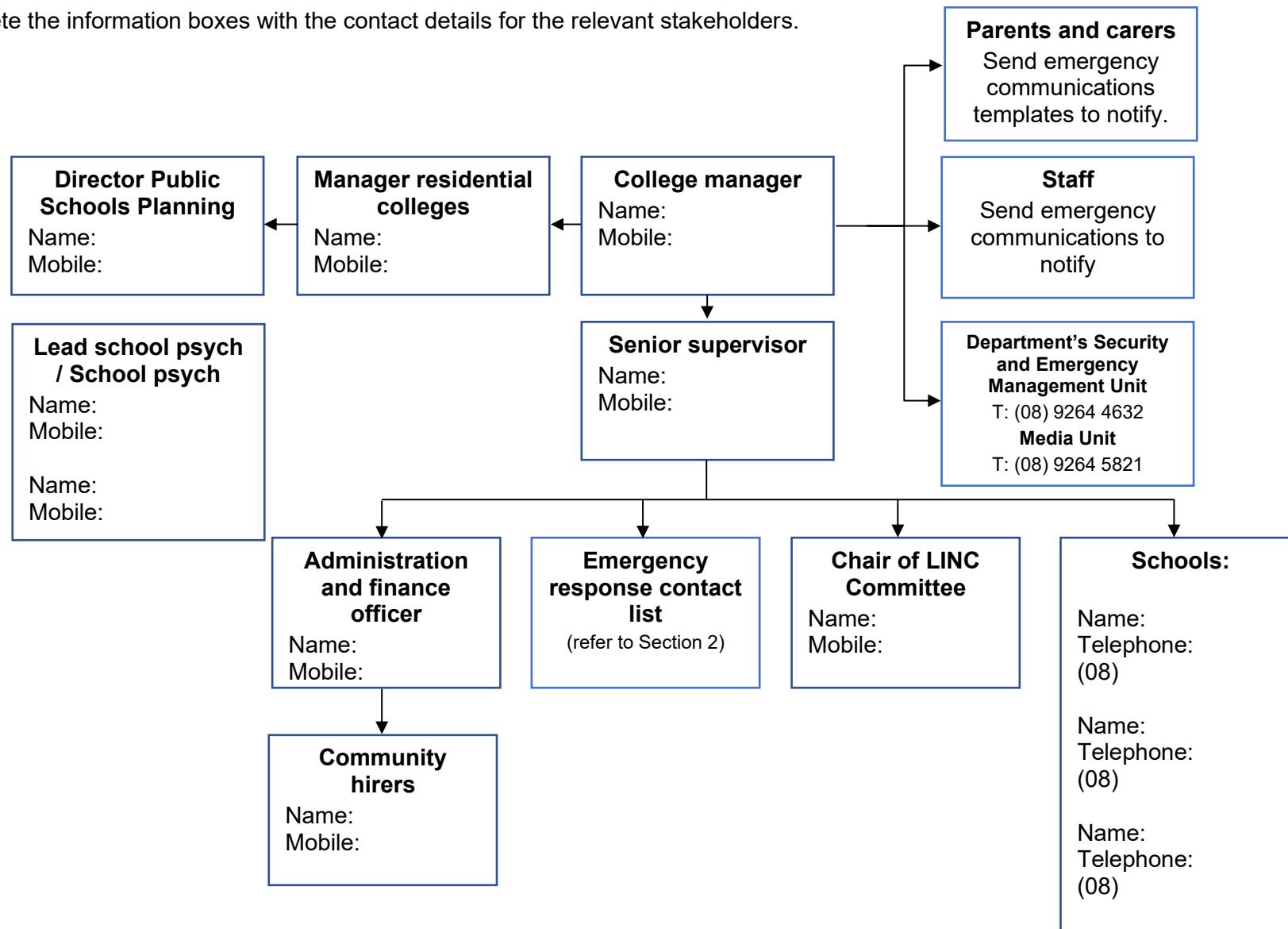
4. School or site response telephone tree

Complete the information boxes with contact details for relevant stakeholders.



4.1 Residential college response telephone tree

Complete the information boxes with the contact details for the relevant stakeholders.



5. Emergency equipment

Identify the location and the type of emergency equipment at your site.

| Equipment | Details (include location/s, date checked and any other comments) |
|--|---|
| Evacuation kit (section 7 of the school or site Incident Management Plan). | Front Office |
| First aid kit(s) - include masks in case some students are susceptible to smoke. | Front Office/Sick Room – checked 28/08/25 |
| Animal emergency kit (refer to Preparedness for animal welfare in emergencies on the Department of Primary Industries and Regional Development). | N/A |
| Emergency alert system and communication equipment, for example: <ul style="list-style-type: none"> • mobile telephones (charged) • hand-operated fire alarm (portable siren) • megaphone/loud hailer • portable CB radios • spare batteries. | Megaphone – checked 28/08/25 Principal's Office Mobile Phone kept charged – checked 28/08/25 |
| Registers for: <ul style="list-style-type: none"> • students • staff • visitors. | Front Office/Kept up-to-date. Checked 28/08/25 |
| Standalone bushfire plan: <ul style="list-style-type: none"> • hard copy in the evacuation kit • copy saved to an online platform for access offsite. | Front Office/Kept up-to-date. Checked 28/08/25 |

6. Bushfire preparation checklist

Principals or site managers must:

- complete this bushfire preparation checklist annually
- inform all staff members of their responsibilities.

You can provide details of your preparation activities in the comments.

| Management activities | <input checked="" type="checkbox"/> or N/A | Comments |
|--|--|--|
| The annual review of the Standalone bushfire plan has been completed before the start of bushfire season. | | 28/08/25 |
| Consulted and received advice in preparing your Standalone bushfire plan from any of the following(as relevant): <ul style="list-style-type: none"> • local Emergency Services • Department of Fire and Emergency Services • Department of Biodiversity, Conservation and Attractions – Parks and Wildlife Service • local volunteer fire brigade • WA Police Force • Local Emergency Management Committee (LEMC) • Local Government • Local Community Emergency Services Manager, | | 28/08/25 |
| Staff have been made aware of the Standalone bushfire plan through: <ul style="list-style-type: none"> • staff meetings • staff bushfire induction session that includes: <ul style="list-style-type: none"> • an overview of the Standalone bushfire plan • how to turn off evaporative air conditioner units, the location of switches • how to close roof vents • the types of <u>bushfire warnings</u> issued by the Department of Fire and Emergency Services and the <u>Emergency Alert</u> telephone warning system • to direct bushfire media enquiries to the Department's media unit (08) 9264 5821. | | Email to staff 28/08/25 Staff Meeting 24/09/25 |
| Students and parents or carers have been made aware of the Standalone bushfire plan through: <ul style="list-style-type: none"> • key bushfire safety messages incorporated into the curriculum • newsletters • school or site information booklet (include actions and procedures) • school or site website. | | School Website Ongoing 2025 Newsletter September 2025 |

Principals or site managers must:

- complete this bushfire preparation checklist annually
- inform all staff members of their responsibilities.

You can provide details of your preparation activities in the comments.

| Management activities | <input checked="" type="checkbox"/> or N/A | Comments |
|--|--|---|
| <p>Communication plans are in place:</p> <ul style="list-style-type: none"> • Emergency response contact list completed (section 2). • Bushfire response telephone tree completed (section 4). • communication templates for sample emergency text message, newsletter content and school or site notice text are complete (refer to Appendix D). <p>Contact lists for staff and parents must be current.</p> | | 28/08/25 |
| <p>Emergency equipment available and checked (section 5):</p> <ul style="list-style-type: none"> • evacuation kit checked at least once per term • emergency warning or alert system works • emergency communications equipment available • first aid kit(s) available • animal emergency kit • registers for students, staff and visitors readily accessible for roll call. | | 28/08/25 |
| <p>Practise drills moving to your onsite 'safer building location(s)':</p> <ul style="list-style-type: none"> • before the start of the bushfire season • at least once per term during the bushfire season. <p>You must do at least 2 drills per year.</p> | | Term 2 and Term 4 |
| <p>The asset protection zone, which is a minimum distance of 20 metres surrounding the main school or site buildings, is checked and is:</p> <ul style="list-style-type: none"> • clear of all rubbish, long dry grass, bark, flammable and combustible materials, including leaf litter and unused piles of mulch • maintained routinely throughout the year. <p>For information on the asset protection zone, refer to Prepare for bushfire season at your school on Ikon.</p> | | <p>Department of Education have completed a yearly inspection and have completed a report re required works.</p> <p>The School Gardener has completed work required by him which is also ongoing throughout the year.</p> |

7. Bushfire action plan maps

7.1 Onsite 'safer building location(s)'

Do not use an open area such as a school oval or non-enclosed building that may expose people to heat or other conditions.

Insert your school or site map and make sure it is marked with:

- the onsite 'safer building location(s)'. Include the name of the building, such as 'library'
- routes to access the 'safer building location(s)'
- fire hydrants
- electrical switchboards
- phones and communication board
- first aid kits
- evacuation kits
- main access gates to site
- any other relevant details.

Information to help select your offsite evacuation location and a sample map is available on Ikon in [Prepare for bushfire season at your school.](#)

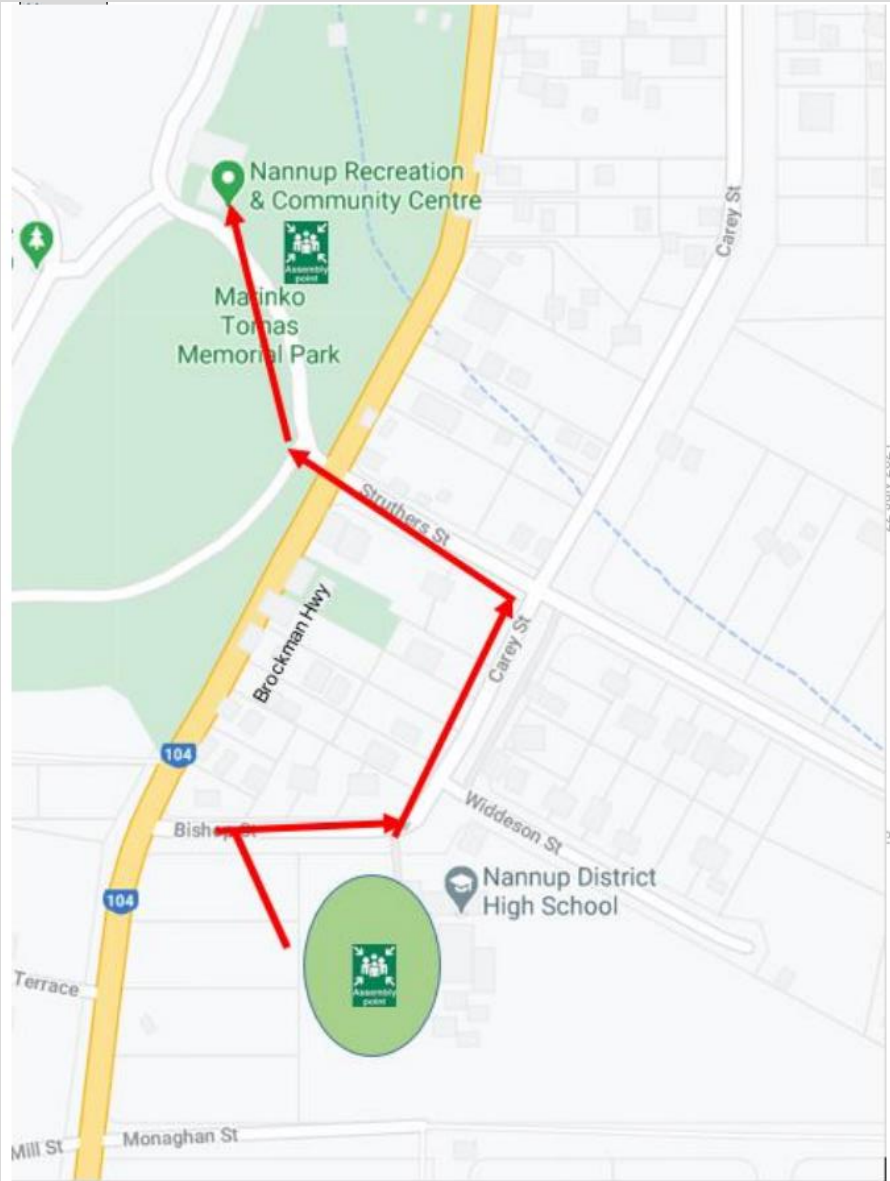


| | |
|---|--|
| <p style="text-align: center;">Nannup District High Onsite Safer Location Map</p> <p style="text-align: center;">TOP LEVEL TOP OVAL</p> <p style="text-align: center;">LOWER LEVEL</p> <p style="text-align: center;">BOTTOM OVAL</p> <p style="text-align: center;">Legend: FIRST AID KITS EXTERNAL POWER POINTS TAPS EVAPORATIVE AIR CONDITIONERS ELECTRICAL BOARDS </p> | <p>Emergency, dial 000</p> <p>Primary action: Determine if the bushfire is a threat to the school or site. Monitor official sources listed in section 2.</p> <p>Secondary action: Refer to Appendix B for the procedures to relocate to onsite 'safer building location(s)'. [list onsite 'safer building location(s)'] Library</p> |
| <div style="display: flex; justify-content: space-around; align-items: center;"> </div> | <p>Map last updated: 28/08/25</p> |

7.2 Offsite evacuation locations

Insert the school or site map and make sure it is marked with:




- an assembly area
- 2 offsite evacuation locations. These locations cannot be a park, reserve, oval or other open space that may expose people to heat or other conditions.
- suitable routes to access the 2 locations.

Information to help select your offsite evacuation location and a sample map is available on Ikon in [Prepare for bushfire season at your school](#).

| | |
|---|--|
| <p>Nannup Sports Centre (Town Evacuation Point) Assemble at school and then walk, following the route on the map)</p> <p>Offsite location as advised by DFES.</p>  | <p>Emergency, dial 000</p> <p>Primary action: Determine if the bushfire is a threat to the school or site. Monitor official sources listed in section 2.</p> <p>Secondary action: Refer to Appendix B for the procedures to Relocate to an offsite evacuation location</p> |
|   | <p>[List all offsite evacuation locations, including addresses]</p> <p>Current Map @ 28/08/25</p> |

Appendix A - Bushfire warning stages

Emergency services communicate information in a number of ways during a bushfire event. Use these warnings to understand when you need to activate your bushfire procedures (refer to Appendix B).

| Bushfire warning stages | |
|---|--|
| <p>ADVICE</p>  | <p>A fire is active but there is no immediate threat to lives or homes. Be aware and keep up to date.</p> <p>This is general information to keep principals or site managers informed and up to date with developments.</p> <p>Principals or site managers must:</p> <ul style="list-style-type: none"> • turn off evaporative air conditioners and ensure roof vents are closed. • check and patrol the school or site regularly for bushfire activity, paying particular attention to the evaporative air conditioners. |
| <p>WATCH AND ACT</p>  | <p>There is a possible threat to lives or homes. Take action now to protect yourself and others.</p> <p>Principals or site managers must prepare to:</p> <ul style="list-style-type: none"> • evacuate; or • move students, staff and visitors to their pre-determined onsite 'safer building location'. They must not be moved to an open area. <p>Evacuation orders are:</p> <ul style="list-style-type: none"> • issued by the Incident Controller or Emergency Services if required. • relayed via official sources such as Emergency WA. <p>It is vital that the principal or site manager:</p> <ul style="list-style-type: none"> • accesses bushfire information from official sources • makes an informed decision to stay onsite or evacuate offsite based on advice from the Incident Controller or Emergency Services. |
| <p>EMERGENCY</p>  | <p>There is a threat to lives and homes. You may be in danger and need to take immediate action.</p> <p>The principal or site manager will be advised whether staff, students and visitors can leave the area or if they must shelter where they are as the fire burns through the area.</p> <p>A siren, called the State Emergency Warning Signal (SEWS), may accompany an emergency warning.</p> <p>Evacuation orders are:</p> <ul style="list-style-type: none"> • directed by the Incident Controller or Emergency Services. • relayed via official sources, such as Emergency WA. <p>It is vital that the principal:</p> <ul style="list-style-type: none"> • accesses bushfire information from official sources • makes an informed decision to stay onsite or evacuate offsite based on the advice. |

Appendix B - Procedures in the event of a sudden bushfire

Relocate to onsite 'safer building location'

The principal or site manager may enact this standalone bushfire plan including relocating to the onsite safer building location as deemed necessary, or upon the advice of the Incident Controller, emergency services, Director of Education, Security and Emergency Management or Incident Support Unit.

When sheltering in place do not use an open area such as a school oval or non-enclosed building.

Initiate this procedure if any of the following occurs:

- a 'Watch and Act' or 'Emergency Warning' alert is issued for an area including the school site on the [Emergency WA](#) website (refer to Appendix A for details about the alerts).
- instruction is received from the Incident Controller, emergency services, Director of Education, Security and Emergency Management or Incident Support Unit..
- any other conditions (eg. smoke or ember attack) where the principal or site manager deem it necessary to initiate this procedure.

Follow these procedures to relocate to the onsite safer building location(s).

| Action | Notes (if required) |
|---|---------------------|
| <p>Dial 000 for emergency services and request fire brigade.</p> <p>When connected to Department of Fire and Emergency Services, advise:</p> <ul style="list-style-type: none"> • your school or site name and address • the fire situation • how many students and staff are being impacted • if moving to a 'safer building location' and where it is located • if anyone requires medical attention • CB radio channel, if being used. • Remain in contact with the Department of Fire and Emergency Services. <p>Monitor official bushfire emergency information contact sources in section 2.1.</p> | |
| <p>Activate your school or site response team to carry out their responsibilities (section 3).</p> | |
| <p>Use your emergency response contact list to contact stakeholders (section 2).</p> | |
| <p>Follow your bushfire response telephone call tree (section 4) to communicate with the community.</p> <p>Ensure parents receive emergency text message alerts to:</p> <ul style="list-style-type: none"> • inform them of relocation • keep them updated (use the emergency text message alert templates, refer to Manage bushfire incident communications on Ikon). <p>Parents must not collect students until instructed.</p> | |

| | |
|---|--|
| <p>Confirm:</p> <ul style="list-style-type: none"> • evaporative air conditioners are turned off • all building roof vents, windows and doors are closed before anyone enters the onsite safer building location(s). • where possible and safe to do so, relocate vehicles or other combustible items (school bags, rubbish bins etc) at least 20 metres from safer building locations. • monitor embers for possible ignition. | |
| <p>Take emergency equipment (section 5):</p> <ul style="list-style-type: none"> • registers for students, staff and visitors • evacuation kit • water • mobile phones (charged) • student medication | |
| <p>Sound the school or site emergency warning or alert system.</p> | |
| <p>The principal/site manager to liaise directly with emergency services to assess risk levels and confirm a safe alternative location for shelter or evacuation.</p> <p>If emergency services cannot be, for example no phone or internet services, then relocate students to the best solid structure – look for a solid brick or stone building with multiple entry and exits, minimal ember entry points and as much clearance from vegetation as possible.</p> <p>Students and staff must remain in classrooms or rooms unless they are directed to move to an onsite safer building location.</p> | |
| <p>Check student, staff and visitor registers after moving to an onsite safer building location (roll call). Advise the police if anyone is missing.</p> <p>You must give special consideration to students with known respiratory conditions.</p> | |
| <p>Wait for emergency services to arrive or the incident controller to provide you with information.</p> <p>Ongoing advice will also be provided by the Manager, Security and Emergency Management or the director of education.</p> <p>Continue to monitor official bushfire information sources listed in section 2.1.</p> | |
| <p>The Department will consult the incident controller or emergency services and notify you when it is safe to return to classrooms or for students to be collected by parents. You will receive advice from the director of education.</p> | |

Offsite evacuation procedures

You may be instructed to relocate to your offsite evacuation location.

The principal or site manager must act on the official advice received from the Incident Controller, emergency services, director of education, Security and Emergency Management or Incident Support Unit, which includes remaining on site and preparing for possible evacuation.

Offsite evacuation procedures should be initiated under direction from either:

- the Incident Controller
- OR
- the director of education

Follow these procedures if you need to evacuate to an offsite evacuation location during a bushfire event.

| Action | Notes (if required) |
|---|---------------------|
| <p>Dial 000 for emergency services and request fire brigade.</p> <p>When connected to Department of Fire and Emergency Services, advise:</p> <ul style="list-style-type: none"> • your school or site name and address • the fire situation • how many students and staff are being impacted • if moving to a 'safer building location' and where it is located • if anyone requires medical attention • CB radio channel, if being used. <p>Remain in contact with Department of Fire and Emergency Services and your director of education.</p> <p>Monitor official bushfire emergency information contact sources listed in section 2.1.</p> | |
| <p>Activate your School or site response team to carry out their responsibilities (section 3).</p> | |
| <p>Refer to the Emergency response contact list to contact stakeholders (section 2).</p> | |
| <p>Follow advice from the incident controller, emergency services or the Manager, Security and Emergency Management, director of education or Incident Support Unit to decide which of the school or site's offsite evacuation location(s) is the safest to use (section 7.2).</p> | |
| <p>If safe to do so, muster at the identified assembly area where staff, students and visitors can gather to prepare for offsite evacuation.</p> <p>Use an alternative assembly area if your first identified assembly area is unsafe.</p> | |

| | |
|--|--|
| Note: Students and staff must remain in classrooms or rooms unless they are directed to move to an onsite safer building location and/or onsite assembly area. | |
| <p>Follow the Bushfire response telephone call tree to communicate with the community (section 4).</p> <p>Ensure parents and carers receive emergency SMS alerts to:</p> <ul style="list-style-type: none"> • inform them of relocation • keep them updated (use the emergency text message alert templates, refer to Manage bushfire incident communications on Ikon). <p>Note: Parents must not collect students until instructed.</p> | |
| <p>Confirm:</p> <ul style="list-style-type: none"> • evaporative air conditioners are turned off • building roof vents and doors are closed. | |
| <p>Take emergency equipment (section 5):</p> <ul style="list-style-type: none"> • registers for students, staff and visitors • evacuation kit • mobile phones (charged). • student medication. <p>Sound the school or site emergency warning or alert system.</p> | |
| <ul style="list-style-type: none"> • Notify bus operators • Notify other contractors scheduled to visit the site • Move all students, staff and visitors from the assembly area to the offsite evacuation location. | |
| Check registers after evacuating staff, students and visitors (roll call). Advise the police if anyone is missing. | |
| <p>The Manager, Security and Emergency Management or the director of education will provide ongoing advice.</p> <p>Continue to monitor official bushfire information sources listed in section 2.1.</p> | |
| <p>The Incident Controller, emergency services or the Manager, Security and Emergency Management or Incident Support Unit will notify the director of education when it is safe to return to classrooms or for students to be collected by parents. You will receive advice from the director of education.</p> | |

Appendix C - Pre-emptive (planned) school closure procedures

You may be instructed to pre-emptively close your school due to a fire behaviour index of 75 (extreme fire danger) or greater being forecast.

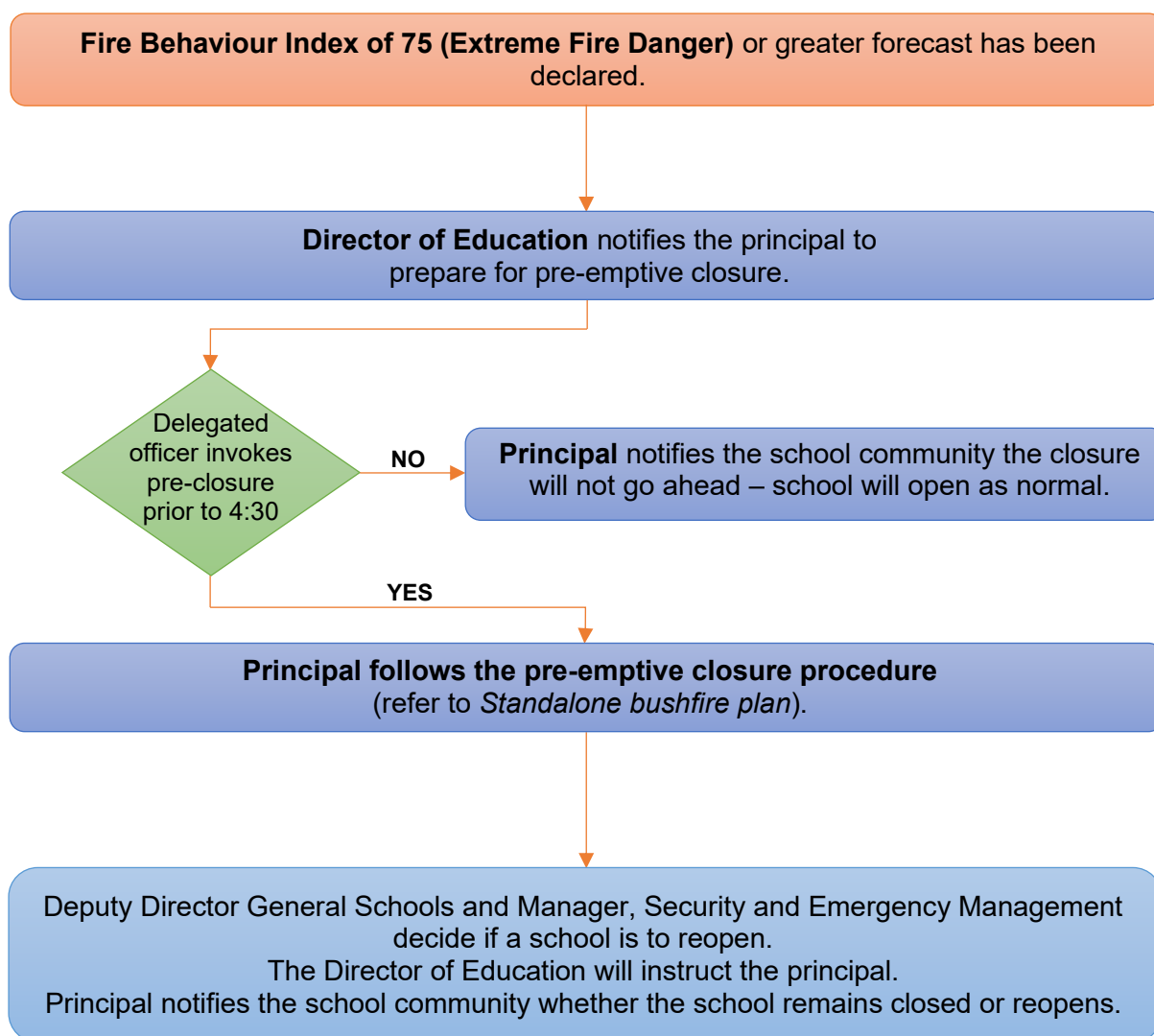
Note: Residential and agricultural colleges remain open when a forecast of a fire behaviour index of 75 (extreme fire danger rating) or greater is issued. These sites must have procedures in place to:

- monitor conditions
- move to the onsite safer building location, if there is any sign of a bushfire
- action an offsite evacuation, on advice from the emergency services.

Schools must initiate the closure procedures below if they receive advice from the director of education or the Security and Emergency Management unit.

| Action | Notes (if required) |
|---|---------------------|
| Monitor official bushfire emergency information contact sources listed in section 2.1. | |
| Activate your School response team to carry out their responsibilities (section 3). | |
| <p>Communicate the pre-emptive closure, continued closure or school or site reopening:</p> <ul style="list-style-type: none"> • use your Emergency response contact list to contact stakeholders (section 2) • use your Bushfire response telephone tree (section 4) • use communication templates in Manage bushfire incident communications for SMS, social media posts and Connect notices to keep your community informed • place the notice of temporary closure on external school or site access points and on the school website. <p>Note: Contact lists for staff, parents and carers must be current.</p> | |
| <p>Confirm:</p> <ul style="list-style-type: none"> • windows and doors are closed • evaporative air conditioners are turned off • roof vents closed • money is removed from the school premises • expensive items of equipment secured. | |
| <p>Secure school premises and activate security system.</p> <p>Before departing, email AssetPlanningServices.SecurityEM@education.wa.edu.au or call 9264 4632 to confirm:</p> <ul style="list-style-type: none"> • all security systems armed • site is secure. | |
| When the pre-emptive closure is cancelled, remove the notice of temporary closure from external school access points. | |

Refer to the following Flow chart – Principal's pre-emptive school closure response.

Flow chart – Principal's pre-emptive school closure response

Appendix D – After-hours or school holiday procedures

You may be instructed to keep your school or site closed during the school holidays or after hours during a bushfire event.

Initiate the below procedure if both of the following occur:

- A 'Watch and act' or 'Emergency warning' bushfire warning alert on the [Emergency WA](#) website is invoked (refer to the bushfire warnings listed in Appendix A)
- AND
- Direction received from the Deputy Director General, Schools or the Manager, Security and Emergency Management. The director of education will relay the decision to you.

Follow these procedures if a bushfire starts during the school holidays or after hours.

| Action | Notes (if required) |
|---|---------------------|
| Remain in contact with your director of education and monitor official bushfire emergency information contact sources listed in section 2.1. | |
| Use your emergency response contact list to contact stakeholders (refer to section 2). | |
| Follow the bushfire response telephone call tree to communicate with your community. Send parents and carers and staff emergency text message alerts to inform them of the school or site closure. To access sample SMS text, refer to Manage bushfire incident communications . | |
| Work with the director of education to seek alternative school or site and transport arrangements (if required). | |
| The Department's Media Unit and Incident Support Unit uses media outlets and Emergency WA to make public announcements of: <ul style="list-style-type: none"> • the school or site closure • temporary alternative accommodation. | |
| The Department will consult the incident controller or emergency services and notify you when it is safe for the school or site to reopen. You will receive advice from the director of education or the Manager, Security and Emergency Management. | |
| Send parents, carers and staff emergency text message alerts to inform them when school or site can reopen. | |